



INDOFINE Chemical Company, Inc.

121 Stryker Lane, Bldg. 30, Suite 1 • Hillsborough, NJ 08844 • U.S.A.

Phone: (908) 359-6778 • FAX: (908) 359-1179

website: www.indofinechemical.com

e-mail: chemical@indofinechemical.com

CERTIFICATE OF ANALYSIS

Cat No.: 22-382

Product: 3,2',4',5'-TETRAMETHOXYFLAVONE

Lot Number: 1212285

Chemical Formula: C₁₉H₁₈O₆

Molecular Weight: 342.35

Melting Point: 112-114°C

Appearance: Off white fluffy powder

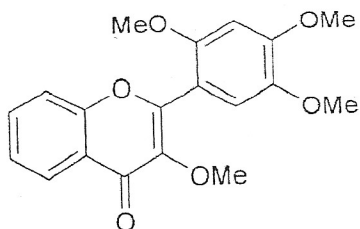
Solubility: Soluble in chloroform

TLC: Hexane:Ethyl acetate (1:1)

NMR Spectrum: Enclosed

Storage: Cool dry place

Purity(HPLC): 97.79%





INDOFINE Chemical Company, Inc.

121 Stryker Lane, Bldg. 30, Suite 1 • Hillsborough, NJ 08844 • U.S.A.

Phone: (908) 359-6778 • FAX: (908) 359-1179

website: www.indofinechemical.com

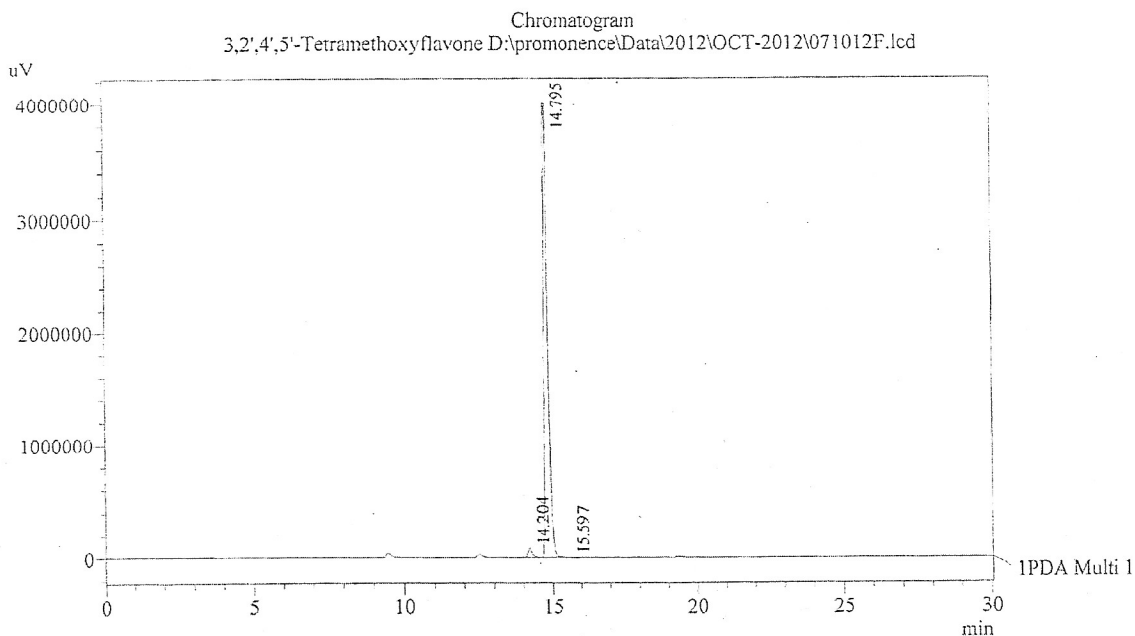
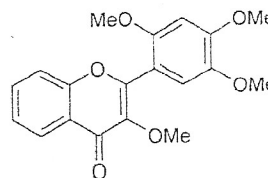
e-mail: chemical@indofinechemical.com

HPLC ANALYSIS

Acquired by : Sanjeev
Sample Name : 3,2',4',5'-Tetramethoxyflavone
Sample ID : 36gm Lot (Herbororganics)
Injection Volume : 20 uL
Data Filename : 071012F.lcd
Method Filename : Linear Gradient.M.lcm

Catalog no.: 22-382
Product name: 3, 2', 4', 5'-Tetramethoxyflavone
Lot No.: 1212285

Column : LUNA C-18(2), (250mm x4.6mm 5.0µ)
Flow : 1.000 mL/min.
Mobile Phase : A(0.05% TFA in water) B(Acetonitrile)
0.01 90 10
12.0 10 90
20.0 10 90
23.0 90 10
30.0 90 10



1 PDA Multi 1 / 240nm 4nm

PeakTable

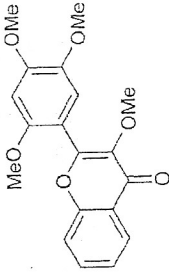
PDA Ch1 240nm 4nm

Peak#	Name	Ret. Time	Area	Area %	Relative Retention Time
1	RT:14.204	14.204	806727	2.11	0.96
2	3,2',4',5'-Tetramethoxyflavo	14.795	37416810	97.79	1.00
3	RT:15.597	15.597	37290	0.10	1.05
Total			38260827	100.00	



INDOFINE Chemical Company, Inc.
 121 STRYKER LANE
 BLDG. 30, SUITE 1
 HILLSBOROUGH, NJ 08844

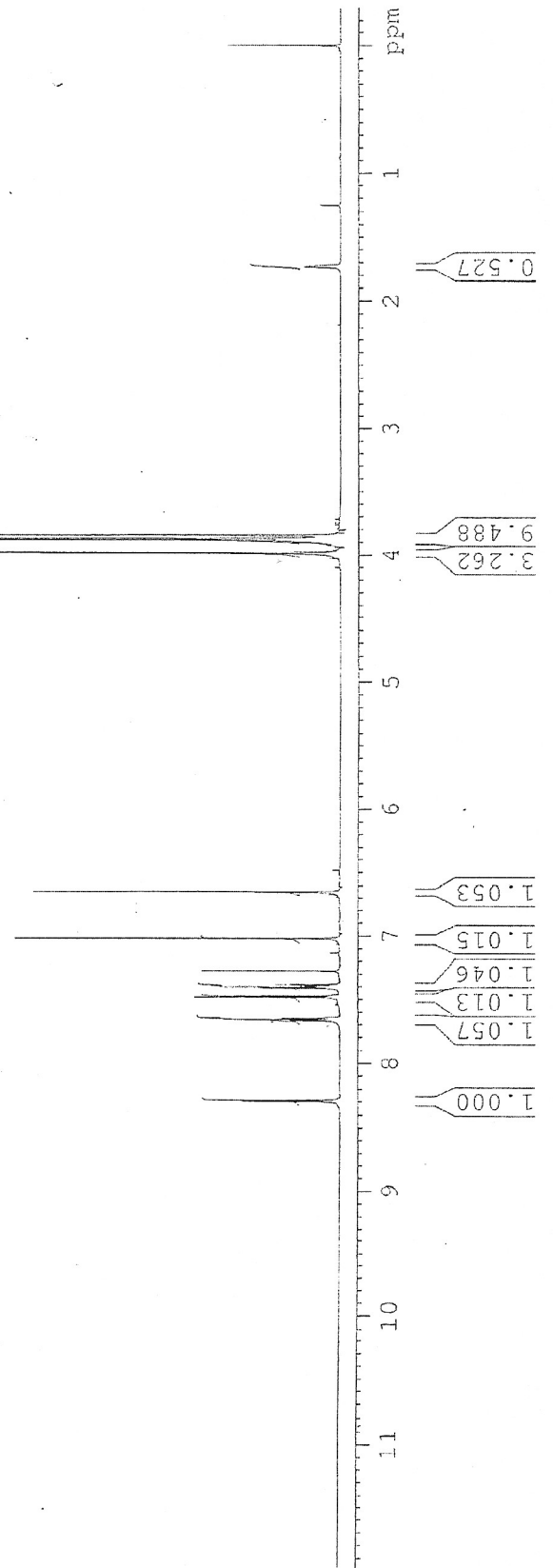
Catalog no.: 22-382
 Product name: 3,2',4',5'-Tetramethoxyflavone
 Lot No.: 1212285



KM-08
 1H IN CDCL3
 AVANCE-600

SOLVENT CDCL3
 NS 2
 DS 0
 SWH 12020.833 Hz
 FIDRES 0.434057 Hz
 AQ 1.1519732 sec
 EG 20.2
 DR 38.400 usec
 DE 6.00 usec
 TE 298.2 K
 D1 1.50000000 sec
 ID0 1

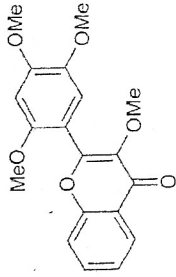
***** CHANNEL f1 *****
 NUCL1 1H
 P1 7.50 usec
 PL1 2.60 dB
 PL1W 6.62581448 W
 SF01 600.3331650 MHz
 SI 32768
 SF 600.3300056 MHz
 WDW EM
 SSB 0
 LB 0.30 Hz
 GB G
 PC 1.00





INDOFINE Chemical Company, Inc.
 121 STRYKER LANE
 BLDG. 30, SUITE 1
 HILLSBOROUGH, NJ 08844

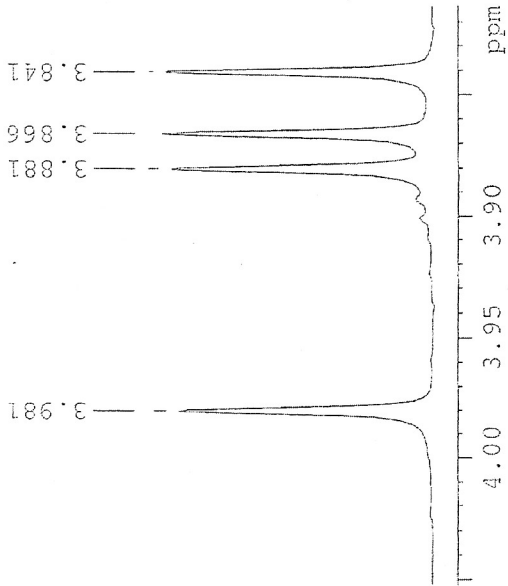
Catalog no.: 22-382
 Product name: 3, 2', 4', 5'-Tetramethoxyflavone
 Lot No.: 1212285



SOLVENT CDCl₃
 NS 0
 DS 0
 SKH 12020.833 Hz
 FIDRES 0.434057 Hz
 AQ 1.151972 sec
 RG 20.2
 DW 38.400 usec
 DE 6.00 usec
 TE 298.2 K
 DI 1.50000000 sec
 TD0 1

KM-08
 1H IN CDCl₃
 AVANCE-600

***** CHANNEL F1 *****
 NUC1 1H
 P1 7.50 usec
 PL1 2.60 dB
 PL1W 6.62584448 W
 SF01 600.3334650 MHz
 SI 32768
 SF 600.333000000 MHz
 WDM EM
 SSB 0
 LB 0.30 Hz
 GE 0
 PC 1.00



7.485
 7.471
 7.411
 7.398
 7.386

7.669
 7.667
 7.655
 7.643
 7.641

7.021
 6.649

8.300
 8.285

